

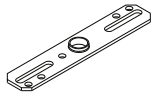
ASSEMBLY AND INSTALLATION INSTRUCTIONS

C0098

WARNING: TO AVOID RISK OF ELECTRICAL SHOCK, BE SURE TO SHUT OFF POWER BEFORE INSTALLING OR SERVICING THIS FIXTURE.

NOTES: 1. Before installing, consult local electrical codes for wiring and grounding requirements.
2. READ AND SAVE THESE INSTRUCTIONS.

Hardware Package (included):



Mounting Strap (A)



Mounting Screw (B)



Green Grounding Screw (C)

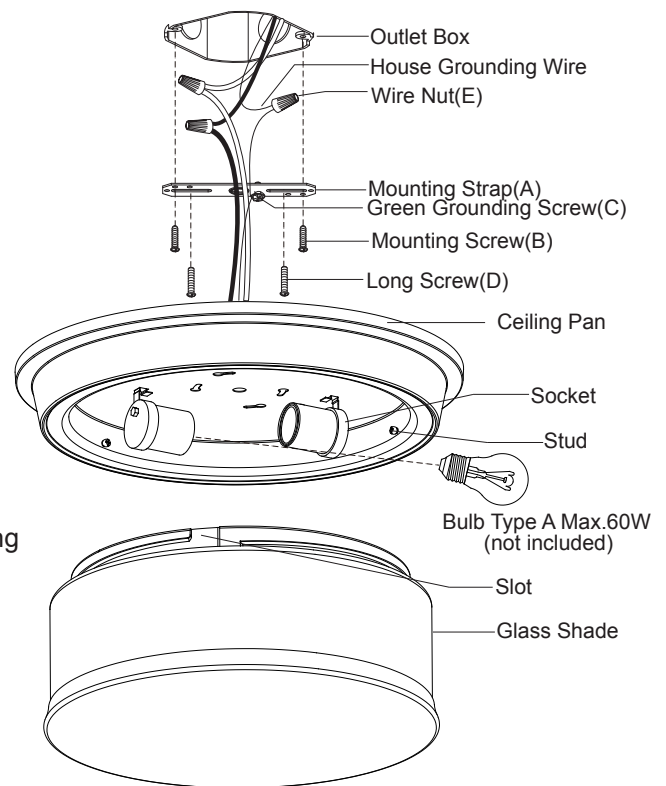
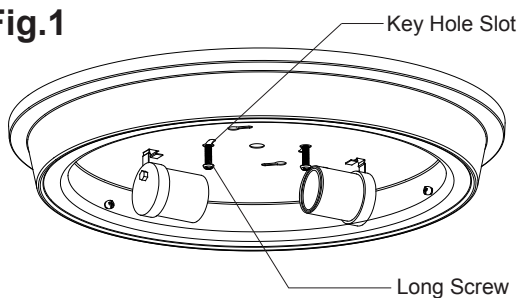


Long Screw (D)



Wire Nut (E)

Fig.1



Installation Steps

Turn off the power at fuse or circuit box

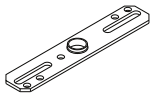
1. Attach the two long screws to the holes on the mounting strap. Thread them in part way: 2 to 3 turns only.
2. Attach the mounting strap to the outlet box using two mounting screws.
3. Pull out the source wires from the outlet box. Make wire connections using wire nuts as follows:
 - Connect the hot wire (usually black insulation) from the fixture to the black wire from the power source.
 - Connect the neutral wire (usually white insulation) from the fixture to the white wire from the power source.
 - Attach the fixture grounding wire (usually green insulation or bare wire) to the mounting strap with the green grounding screw, and then connect them to the house grounding wire with the wire nut. }Carefully put the wires back into the outlet box.
4. Attach the ceiling pan to the mounting strap by inserting two long screw heads into the key holes. Rotate the ceiling pan until it is locked into place, and then tighten the long screws to secure it. (See Fig.1)
5. Install two bulbs (not included). Check relamping label at socket area or packaging for maximum allowed wattage.
6. Attach the glass shade to the ceiling pan by aligning studs and slots, and turn it clockwise until it locks in place.

Caution: Do not over tighten.

Turn on the power at fuse or circuit box

The following parts are available for re-order if damaged or missing.

Spare Parts List:



Mounting Strap (A)



Mounting Screw (B)



Long Screw (C)

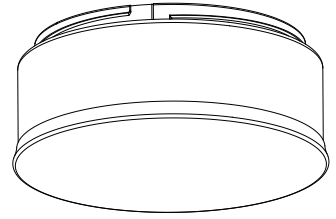


Green Grounding
Screw (D)

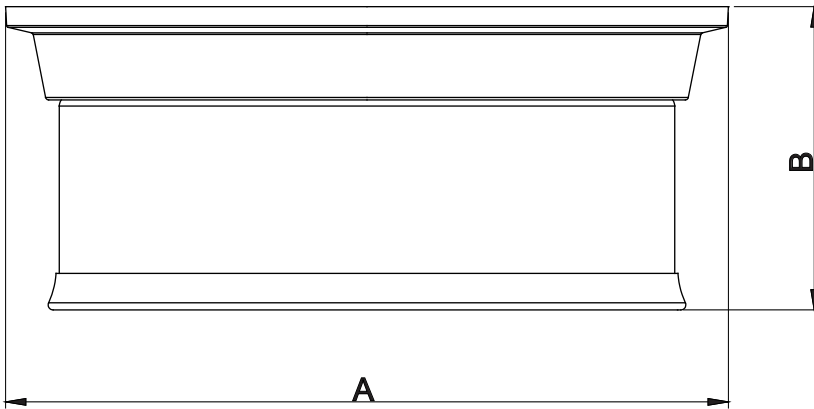


Wire Nut (E)

Assembly Kit
5384MM (1 SET)



Glass Shade
9727FO(1PC)



A: 14"

B: 6"